

Ductile iron pipe fitting for water pipeline



青島沃德管道配件有限公司
VORTEX QINGDAO CO., LTD.

Add: North Industry Park of Jimo, Qingdao, CHINA
Tel: +86-532-85015186/85010020/85011161
Fax: +86-532-85012826/85015085
Http://www.vortex-pipefitting.cn
E-mail: info@vortex-pipefitting.cn



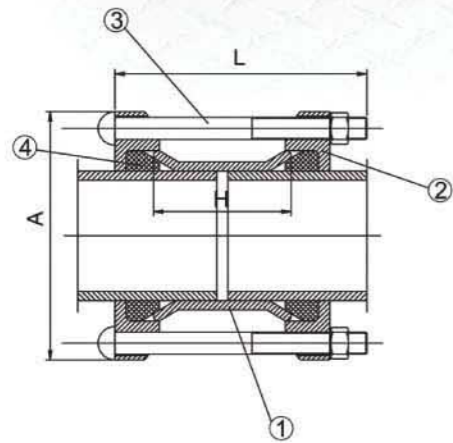
青島沃德管道配件有限公司
VORTEX QINGDAO CO., LTD.



Universal Coupling(wide range)



NO.	REFERENCE	MATERIAL	STANDARD
1	SLEEVE	STEEL/DUCTILE IRON	
2	END RING	DUCTILE IRON GGG400-10	EN1563
3	BOLT AND NUT	STEEL 8.8 ZINCED/DACRO	
4	GASKET	EPDM/NBR	EN681
5	COATING	FBE/Rilsan	EN14901

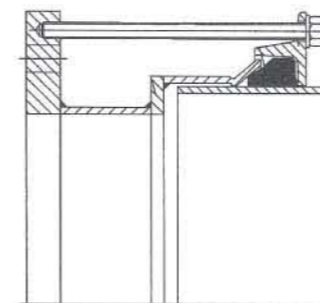
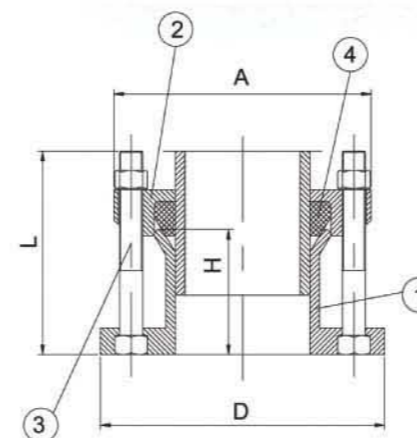


UNIVERSAL COUPLING													
PIPE NORM	RANGE	BOLT		A	H	WEIGHT	Pipe to fit						
		L	Q'TY				MM	MM	KGS	DI	ST	PVC	AC
DN40	48-60	M12 x 170	2	160	98	2.4		★	▲				+
DN50	59-72	M12 x 170	2	165	98	2.5		★	▲	◆	○	+	
DN65	72-85	M12 x 170	2	185	98	3.2		★	▲		○	+	
DN80	88-103	M12 x 180	4	185	103	4.1	●	★	▲	◆	○	+	
DN100	109-128	M12 x 180	4	218	103	4.8	●	★	▲	◆	○	+	
DN125	132-146	M12 x 180	4	250	103	6.3		★				+	
DN125	138-153	M12 x 180	4	260	103	6.8		★	▲		○	+	
DN150	159-182	M12 x 190	4	272	103	7.2	●	★	▲	◆	○	+	
DN175	192-210	M12 x 190	4	312	130	11.0		★	▲		○		
DN200	218-235	M12 x 210	4	335	130	12.5	●	★	▲	◆	○	+	
DN225	242-262	M12 x 210	6	350	130	14.5		★	▲	◆	○		
DN250	250-267	M12 x 220	6	380	130	15.0			▲	◆	○		
DN250	272-289	M12 x 220	6	405	130	16.0	●	★	▲	◆	○	+	
DN300	315-332	M12 x 220	8	430	130	17.0	●	★	▲			+	
DN300	322-339	M12 x 220	6	435	130	18.0	●	★		◆	○	+	
DN350	340-360	M12 x 220	6	455	130	22.0		★	▲	◆	○		
DN350	351-378	M14 x 250	8	490	130	31.9	●	★	▲	◆		+	
DN350	374-391	M14 x 250	8	510	130	33.0	●			◆			
DN400	390-410	M14 x 250	8	530	130	35.0		★	▲	◆			
DN400	410-436	M14 x 250	8	570	130	38.5	●			◆	○	+	
DN400	417-437	M14 x 250	8	580	130	39.6	●			◆	○	+	
DN400	425-442	M14 x 250	8	590	130	39.6	●			◆	○	+	
DN400	436-462	M14 x 250	8	600	130	40.7		★	▲	◆	○		
DN450	454-463	M14 x 250	10	600	130	45.1		★	▲	◆			
DN450	476-500	M14 x 250	10	640	130	47.3	●		▲	◆	○		
DN500	500-508	M14 x 250	10	650	130	47.3		★	▲	◆	○		
DN500	526-546	M14 x 250	10	690	130	53.9	●			◆	○	+	
DN500	560-570	M14 x 250	10	720	130	55.0		★	▲	◆	○		
DN500	580-590	M14 x 250	10	740	130	55.0				◆	○		
DN600	600-630	M14 x 250	10	790	130	71.5		★	▲	◆	○		
DN600	630-650	M14 x 250	10	800	130	57.2	●		▲	◆	○		
DN650	662-679	M14 x 250	10	840	130	77.0		★		◆	○		
DN800	800-816	M16 x 280	12	960	130	120.0		★	▲	◆			

Universal Flange Adaptor(wide range)

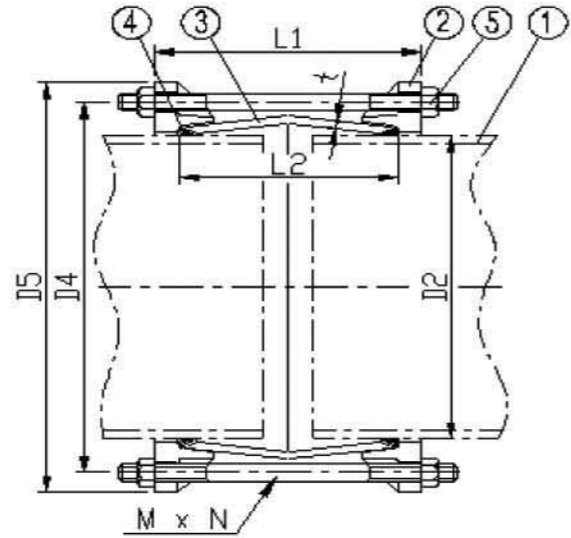


NO.	REFERENCE	MATERIAL	STANDARD
1	BODY	DUCTILE IRON GGG400-10	EN1563
2	END RING	DUCTILE IRON GGG400-10	EN1563
3	BOLT AND NUT	STEEL 8.8 ZINCED/DACRO	
4	GASKET	EPDM/NBR	EN681
5	COATING	FBE/Rilsan	EN14901
6	BOLT TORQUE	M12	55-65NM
		M14	95-110NM
7	PRESSURE	WATER	16BAR
		GAS	6BAR



UNIVERSAL FLANGE ADAPTOR															
PIPE NORM	RANGE	PRESSURE	BOLT		A	D	H	WEIGHT	Pipe to fit						
			L	Q'TY					MM	MM	MM	KGS	DI	ST	PVC
DN40	48-60	PN10/15	M12 x 130	2	160	150	78	3.2		★	▲				+
DN50	59-72	PN10/16	M12 x 130	2	165	165	78	3.5		★	▲	◆	○	+	
DN65	72-85	PN10/16	M12 x 130	2	185	190	78	3.9		★	▲		○	+	
DN80	88-103	PN10/16	M12 x 140	4	185	210	78	4.5	●	★	▲	◆	○	+	
DN100	109-128	PN10/16	M12 x 140	4	218	225	78	6.0	●	★	▲	◆	○	+	
DN125	138-153	PN10/16	M12 x 140	4	260	250	78	7.0		★	▲		○	+	
DN150	159-182	PN10/16	M12 x 140	4	272	288	78	7.8	●	★	▲	◆	○	+	
DN175	192-210	PN10/16	M12 x 140	4	312	340	78	11.6		★	▲		○		
DN200	218-235	PN10/16	M12 x 140	4	335	345	78	11.9		★	▲		○		
DN250	242-262	PN10/16	M12 x 140	6	350	405	85	13.0		★	▲	◆	○		
DN250	250-267	PN10/16	M12 x 150	6	380	405	85	14.0			▲	◆	○		
DN250	272-289	PN10/16	M12 x 150	6	405	405	85	14.5	●	★	▲	◆	○	+	
DN300	315-332	PN10/16	M12 x 150	6	430	455	85	18.5	●	★	▲			+	
DN300	322-339	PN10/16	M12 x 150	6	435	455	85	19.0	●	★		◆	○	+	
DN300	340-360	PN10/16	M12 x 150	6	435	455	85	20.0		★	▲	◆	○		
DN350	351-378	PN10/16	M14 x 180	8	490	520	108	35.0	●	★	▲	◆		+	
DN350	374-391	PN10/16	M14 x 180	8	510	520	108	41.5	●			◆			
DN400	390-410	PN10/16	M14 x 180	8	530	580	108	49.5		★	▲	◆			
DN400	425-442	PN10/16	M14 x 180	8	590	580	108	52.8	●				○	+	
DN450	476-500	PN10/16	M14 x 180	10	640	640	108	61.6	●		▲	◆	○		
DN500	526-546	PN10/16	M14 x 180	10	690	715	114	68.2	●			◆	○	+	
DN600	600-630	PN10/16	M14 x 180	10	790	840	114	80.0		★	▲	◆	○		
DN600	630-650	PN10/16	M14 x 180	10	840	840	114	84.7	●		▲		○		
DN450	454-463	PN16	M14 x 180	10	600	640	120	57.2		★	▲	◆			
DN500	500-508	PN16	M14 x 180	10	650	715	120	60.0		★	▲	◆	○		
DN500	560-570	PN16	M14 x 180	10	720	715	150	70.5		★	▲	◆	○		
DN500	580-590	PN16	M14 x 180	10	740	715	150	71.5				◆	○		
DN800	800-816	PN16	M16 x 200	12	960	1025	180	120.0		★	▲	◆			

Flexible Couplings For Ductile Iron Pipe

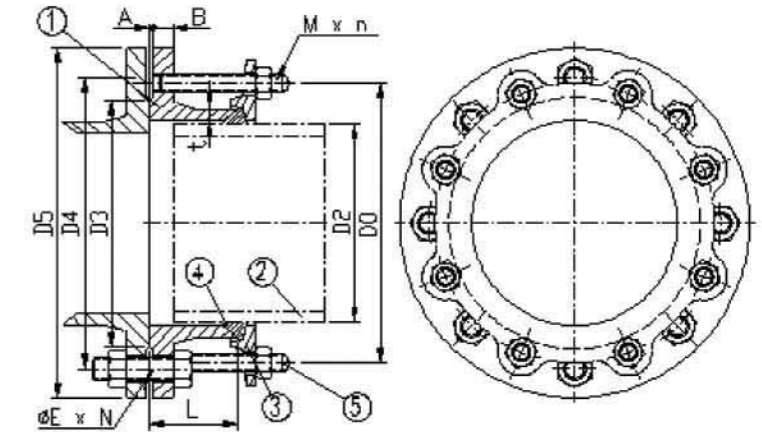


NO.	PART NAME	MATERIAL
1	PIPE	DUCTILE IRON GGG400-10
2	RETAINER	DUCTILE IRON GGG400-10
3	BODY	DUCTILE IRON GGG400-10
4	RING	EPDM/NBR
5	STUD	STEEL ZINCED/DACRO

DN	D2	D4	D5	L1	L2	t	M	N	W (Kg)
80	98	169	198	178	102	7.0	12	4	6.4
100	118	189	218	178	102	7.5	12	4	7.0
125	144	215	244	178	102	7.5	12	4	9.1
150	170	241	270	178	102	8.0	12	4	11.2
200	222	293	322	178	102	8.5	12	6	15.0
250	274	345	374	178	102	9.0	12	6	21.5
300	326	397	426	178	102	10.0	12	8	23.1
350	378	458	491	262	152	10.5	16	8	36.4
400	429	509	542	262	152	11.0	16	8	42.4
450	480	556	589	262	152	11.5	16	10	50.7
500	532	608	641	262	152	12.0	16	10	54.6
600	635	711	744	262	152	13.5	16	12	74.1
700	738	814	847	262	152	14.5	16	12	97.5
800	842	918	951	262	152	16.0	16	12	105.0
900	945	1031	1064	278	178	17.0	16	14	147.0
1000	1048	1134	1167	278	178	18.0	16	14	157.5
1100	1152	1245	1278	290	178	19.5	16	16	272.0
1200	1255	1348	1381	290	178	20.5	16	18	301.0
1400	1462	1555	1588	290	178	23.0	16	20	406.0
1500	1565	1658	1691	290	178	24.0	16	20	443.2
1600	1668	1761	1794	290	178	25.5	16	24	480.0
1800	1875	1974	2007	437	254	28.0	16	32	640.0
2000	2082	2187	2220	437	254	30.0	16	36	860.0

Note: Coupling for PVC/UPVC pipe, AC pipe, Steel pipe are available

Flange Adaptor For Ductile Iron Pipe

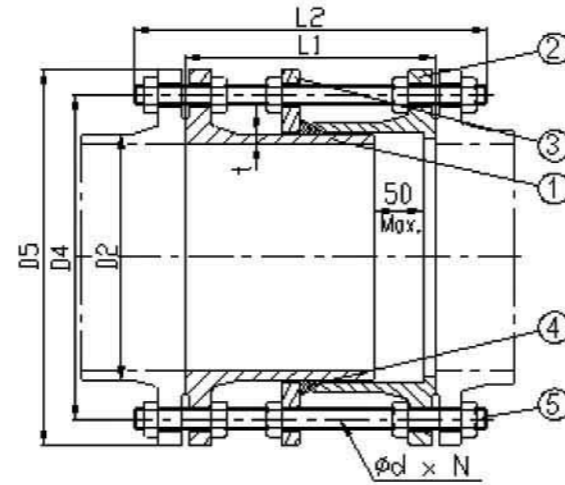


NO.	PART NAME	MATERIAL
1	BODY	DUCTILE IRON GGG400-10
2	PIPE	DUCTILE IRON GGG400-10
3	RETAINER	DUCTILE IRON GGG400-10
4	RING	EPDM/NBR
5	STUD	STEEL ZINCED/DACRO

Ductile iron pipe Flange drilled to BS 4504:1989 PN 16

DN	D2	D3	D4	D5	Do	L	t	A	B	φ E	N	M	n	W (Kg)
80	98	132	160	200	166	73	7.0	3	16.0	19	8	M12	4	7.5
100	118	156	180	220	187	76	7.5	3	16.0	19	8	M12	4	8.3
125	144	184	210	250	210	76	7.5	3	16.0	19	8	M12	4	11.7
150	170	211	240	285	240	76	8.0	3	16.0	23	8	M12	4	13.9
200	222	266	295	340	295	76	8.5	3	17.0	23	12	M12	6	19.5
250	274	319	355	400	355	90	9.0	3	19.0	28	12	M12	6	26.9
300	326	370	410	455	410	90	10.0	4	20.5	28	12	M12	6	31.9
350	378	429	470	520	470	110	10.5	4	22.5	28	16	M16	8	45.2
400	429	480	525	580	525	110	11.0	4	24.0	31	16	M16	8	56.6
450	480	544	585	640	585	110	11.5	4	26.0	31	20	M16	10	71.5
500	532	609	650	715	650	115	12.0	4	27.5	34	20	M16	10	81.3
600	635	720	770	840	770	115	13.5	5	31.0	37	20	M16	10	97.5
700	738	794	840	910	840	115	14.5	5	34.5	37	24	M16	12	126.0
800	842	901	950	1025	950	115	16.0	5	38.0	40	24	M16	12	142.5
900	945	1001	1050	1125	1050	115	17.0	5	41.5	40	28	M16	14	183.0
1000	1048	1112	1170	1255	1170	115	18.0	5	45.0	43	28	M16	14	204.0
1100	1152	1215	1270	1355	1270	130	19.5	5	48.5	43	32	M16	16	253.5
1200	1255	1328	1390	1485	1390	130	20.5	5	52.0	49	32	M16	16	303.8
1400	1462	1530	1590	1685	1590	130	23.0	5	55.0	49	36	M20	18	432.0
1500	1565	1640	1710	1820	1710	130	24.0	5	57.5	56	36	M20	18	634.5
1600	1668	1750	1820	1930	1820	190	25.5	5	60.0	56	40	M20	40	837.0
1800	1875	1950	2020	2130	2020	190	28.0	5	65.0	56	44	M20	44	936.0
2000	2082	2150	2230	2345	2230	190	30.0	5	70.0	62	48	M20	48	1044.0

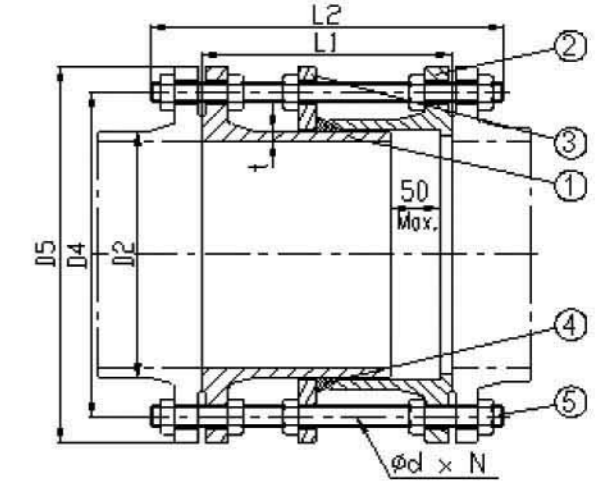
Dismantling Joint rigid type Flange drilled to Class PN10



NO.	PART NAME	MATERIAL
1	PIPE	DUCTILE IRON GGG400-10
2	BODY	DUCTILE IRON GGG400-10
3	RETAINER	DUCTILE IRON GGG400-10
4	RING	EPDM/NBR
5	STUD	STEEL ZINCED/DACRO

DN	D2	D4	D5	L1	L2	d(Φ)	N	t	W(Kg) PN10
50	62	125	165	180	320	19	4	6.0	18
65	78	145	185	180	320	19	4	6.0	20
80	98	160	200	200	340	19	8	7.0	22.1
100	118	180	220	200	340	19	8	7.5	27.3
125	144	210	250	200	340	19	8	7.5	33.8
150	170	240	285	200	340	23	8	8.0	45.5
200	222	295	340	220	350	23	8	8.5	63.7
250	274	350	400	230	370	23	12	9.0	84.5
300	326	400	455	230	390	23	12	10.0	94.5
350	378	460	505	250	400	23	16	10.5	126.1
400	429	515	565	250	420	28	16	11.0	162.5
450	480	565	615	270	435	28	20	11.5	182.0
500	532	620	670	280	440	28	20	12.0	210.6
600	635	725	780	300	460	31	20	13.5	266.5
700	738	840	895	300	480	31	24	14.5	390.0
800	842	950	1015	320	500	34	24	16.0	532.5
900	945	1050	1115	320	500	34	28	17.0	612.0
1000	1048	1160	1230	340	545	37	28	18.0	675.0
1100	1152	1270	1340	350	545	37	32	19.5	877.5
1200	1255	1380	1455	370	580	40	32	20.5	1125.0
1400	1462	1590	1675	380	680	43	36	23.0	1552.5
1500	1565	1700	1785	410	680	43	36	24.0	1743.0
1600	1668	1820	1915	410	720	49	40	25.5	2280.0
1800	1875	2020	2115	440	720	49	44	28.0	2991.0
2000	2082	2230	2325	460	720	49	48	30.0	—

Dismantling Joint rigid type Flange drilled to Class PN16

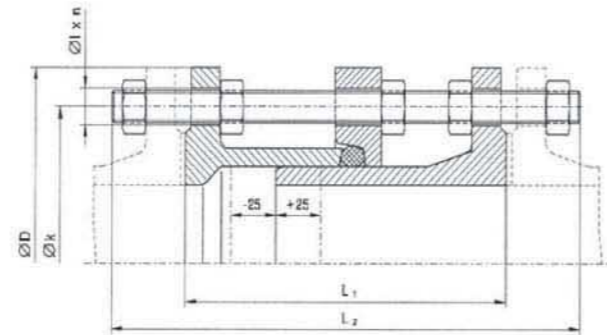
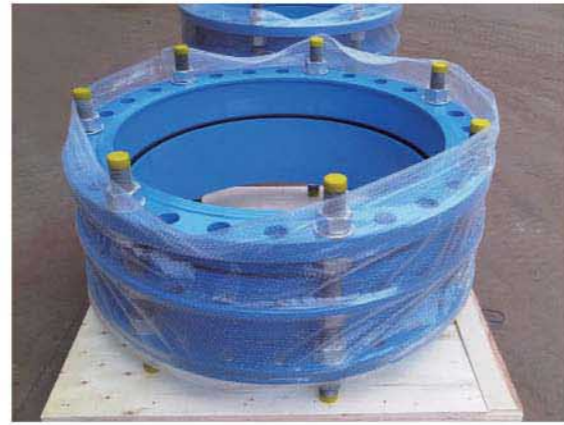


NO.	PART NAME	MATERIAL
1	PIPE	DUCTILE IRON GGG400-10
2	BODY	DUCTILE IRON GGG400-10
3	RETAINER	DUCTILE IRON GGG400-10
4	RING	EPDM/NBR
5	STUD	STEEL ZINCED/DACRO

DN	D2	D4	D5	L1	L2	d(Φ)	N	t	W(Kg) PN16
60	62	125	165	180	320	19	4	6.0	18
65	78	145	185	180	320	19	4	6.0	20
80	98	160	200	200	340	19	8	7.0	24.7
100	118	180	220	200	340	19	8	7.5	28.6
125	144	210	250	200	340	19	8	7.5	35.1
150	170	240	285	200	340	23	8	8.0	46.8
200	222	295	340	220	350	23	12	8.5	68.9
250	274	355	400	230	380	28	12	9.0	101.4
300	326	410	455	230	400	28	12	10.0	122.2
350	378	470	520	250	410	28	16	10.5	169.0
400	429	525	580	250	430	31	16	11.0	210.6
450	480	585	640	270	450	31	20	11.5	247.0
500	532	650	715	280	460	34	20	12.0	312.0
600	635	770	840	300	500	37	20	13.5	435.5
700	738	840	910	300	500	37	24	14.5	555.0
800	842	950	1025	320	530	40	24	16.0	720.0
900	945	1050	1125	320	530	40	28	17.0	825.0
1000	1048	1170	1255	340	570	43	28	18.0	1080.0
1100	1152	1270	1355	350	570	43	32	19.5	1230.0
1200	1255	1390	1485	360	620	49	32	20.5	1665.0
1400	1462	1590	1685	380	680	49	36	23.0	2040.0
1500	1565	1710	1820	400	700	56	36	24.0	—
1600	1668	1820	1930	420	750	56	40	25.5	2904.0
1800	1875	2020	2130	440	750	56	44	28.0	3690.0
2000	2082	2230	2345	460	750	62	48	30.0	—

Dismantling Joint rigid type
Flange drilling to Class PN25/PN40

Size Nennweite DN	D	k	n	l	L1	L2	Gewicht Weight	
							PN25	PN40
mm	mm	mm		mm	mm	mm	kg	kg
80	200	160	8	19	210	330	25	29
100	235	190	8	23	220	340	29	35
125	270	220	8	28	220	370	36	43
150	300	250	8	28	230	370	49	56
200	360	310	12	28	230	370	73	96
250	425	370	12	31	250	410	106	132
300	485	430	16	31	250	410	130	169
350	555	490	16	34	270	440	180	241
400	620	550	16	37	280	480	223	289
450	670	600	20	37	280	480	266	380
500	730	660	20	37	300	480	340	452
600	845	770	20	41	320	520	465	588
700	960	875	24	44	340	530	515	635
800	1.085	990	24	50	360	600	672	842
900	1.185	1.090	28	50	380	600	767	946
1000	1.320	1.210	28	57	400	650	1.008	1.450

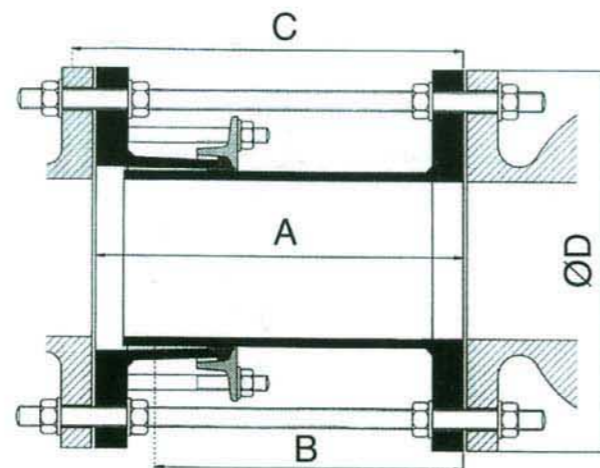
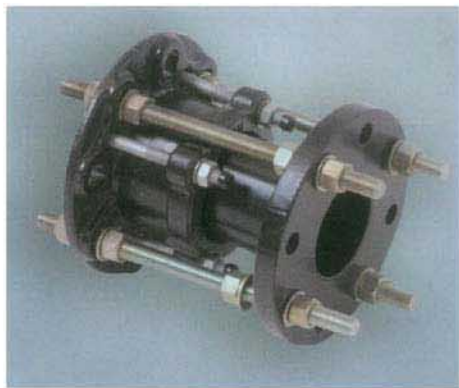


Dismantling joint VJ type

Pressure:PN10、PN16、PN25、PN40

Material:Ductile iron or fabricated Carbon steel

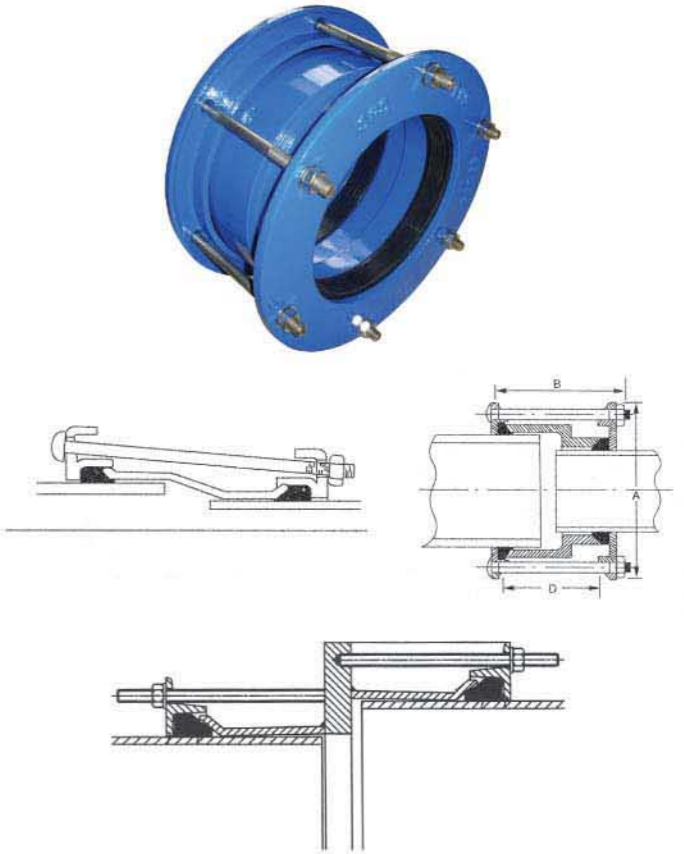
Size:DN50–DN600



Step Coupling(wide range and single range)



NOMINAL BORE (mm)	NOMINAL BORE (mm)	APPROX MASS(kg)
50/65	59-72/72-85	2.6
80/100	88-103/109-128	4.6
100/125	109-128/138-153	5.2
125/150	138-153/159-182	6.4
150/175	159-182/192-210	7.2
175/200	192-210/218-238	12.4
200/250	218-235/250-267	16.8
250/250+	250-267/272-289	22.4
250/300	272-289/315-332	30.0



Sizes:50–300
Max Working Pressure 16Bar
Other sizes are available



A type gasket

Standard:EN545/ISO2531

Material:EPDM/SBR/FPM

Size:DN40–DN2000



Tyton-sit anchor gasket

Standard:ISO2531/EN545

Material:EPDM/SBR

Size:DN80–DN600

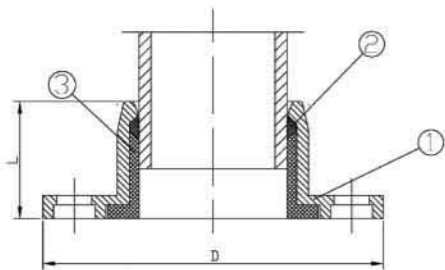
Quick Flange Adaptor for PE/PVC Pipe (and DI pipe)



For PVC, and DI pipe



For PE pipe



NO	NAME	MAT ERIAL	STANDARD
1	BODY	Ductile iron	EN1563
2	RUBBER	EPDM/NBR	EN1563
3	RING	Brass	EN681

PN10/PN16 (Multi Flange Holes)				
SIZE	PIPE OD	L	D	WEIGHT(Kg)
DN50	63	55	183	2.42
DN60/65	75	58	183	3.08
DN80	90	60	200	3.96
DN100	110	68	220	4.40
DN125	125	70	250	5.17
DN125	140	75	250	5.28
DN150	160	80	283	7.59
DN200	200	93	340	10.56
DN250	250	75	340	12.65
DN300	315	100	455	15.07
DN400	400	120	565	26.40



Stopped flange adaptor for PVC/PE pipe

Stopper material:Ductile with Dacromet

Pressure:DN10/16

Size:DN63-200



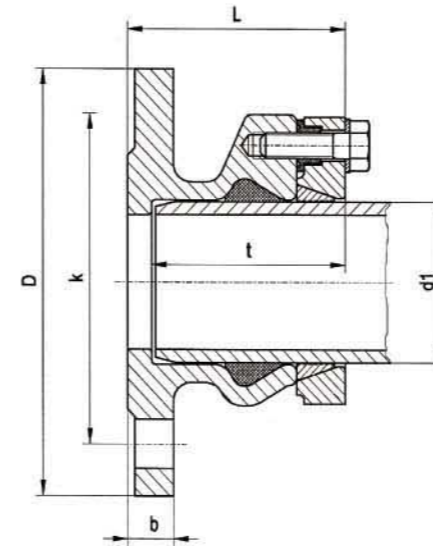
Flange adaptor for PVC pipe

Material:GGG100-10 with FBE coating

Pressure:DN10/16

Size:DN63-915

Restrained flange adaptor for HD-PE pipes



Assembly instructions and tensile load

Material:

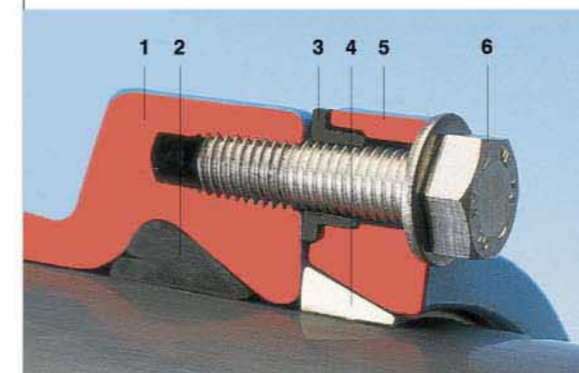
Body (1), Lock ring (5)
of ductile iron EN-GJS-400-18 according to EN 1563 (GGG 400 - DIN 1693), epoxy powder coated

Lip seal (2) of elastomer, suitable for potable water

Spacer bushes (3) of PE

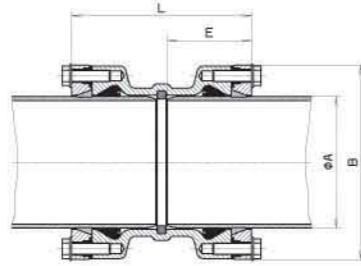
Grip ring (4) Ms 58 (from DN 300 Rg7)

Bolts (6) A 2 (stainless)



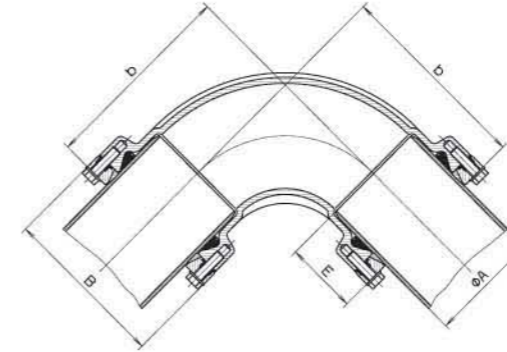
Size	Pipe Ø	Dimensions					Weight
DN mm	d1 mm	D mm	k mm	b mm	l mm	t mm	kg
50	63	165	125	19	90	80	3.6
60	63	175	135	19	90	80	3.8
60	75	175	138	19	92	82	4.0
65	63	185	148	19	90	80	4.3
65	75	185	145	19	92	82	4.3
80	75	200	160	19	92	82	5.0
80	90	200	160	19	95	85	5.5
100	90	220	180	19	95	85	6.8
100	110	220	180	19	95	85	6.2
100	125	220	180	19	97	87	7.0
125	110	250	210	19	95	85	7.8
125	125	250	210	19	97	87	8.2
125	140	250	210	19	103	93	8.5
150	140	285	240	19	103	93	11.3
150	160	285	240	19	115	105	10.5
150	180	285	240	19	125	115	11.6
200	200	340	295	20	135	125	18.0
200	225	340	295	20	138	128	16.0
250	250	400	350	22	155	145	22.0
250	280	400	350	22	158	148	29.0
300	315	455	400	24.5	185	175	44.0

Coupling



Pipe ϕ A mm	L	E	B	Weight kg
63	171	80	124	3,2
75	175	82	138	4,0
90	181	85	152	5,4
110	181	85	172	6,4
125	185	87	193	7,8
140	197	93	210	9,0
160	221	105	236	12,0
180	241	113	258	14,5
200	261	125	284	21,5
225	265	128	314	26,0
250	300	145	347	33,0
280	306	148	376	38,5
315	358	174	422	58,5
355	464	237	472	96,0

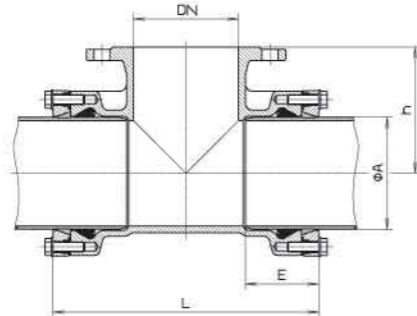
Bend



Pipe ϕ mm	b				t	B	Weight kg			
	90°	45°	30°	11°			90°	45°	30°	11°
63	153	112			80	124	4,2	3,7		
75	170	120			82	138	5,5	4,5		
90	188	129	115	98	85	152	7,1	6,4	6,0	5,7
110	213	140	122	100	85	172	9,2	7,5	7,3	6,6
125	240	153			87	193	11,7	9,9		
140	246	159			93	210	15,0	12,3		
160	283	181	155		105	236	19,5	16,0	16,0	
180	293	191			113	258	24,0	19,5		
200	353	221			125	284	37,5	30,0		
225	355	224			128	314	43,0	39,0		
250	427	263			145	347	57,0	43,5		
280	430	266			148	376	69,0	55,0		
315	506	313			174	422	101,0	67,0		

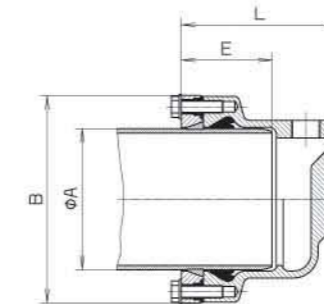
Double Socket

Tee with flanged branch
equal and reducing



ϕ A mm	DN	L	E	h	Weight kg
63	50	236	83	100	8,0
75	65	250	85	110	9,0
90	80	268	85	140	11,0
110	50	240	85	150	10,0
	80	270	85	150	11,5
125	100	290	85	150	12,0
	80	274	87	160	14,0
140	100	294	87	160	14,0
	80	288	93	170	15,0
160	100	308	93	170	15,5
	80	300	105	180	16,5
180	100	320	105	180	17,0
	150	380	105	180	20,0
200	80	310	113	200	23,0
	150	415	113	200	31,0
225	200	480	130	220	47,0
	80	356	130	220	33,5
250	100	376	130	220	33,0
	200	488	130	230	55,0

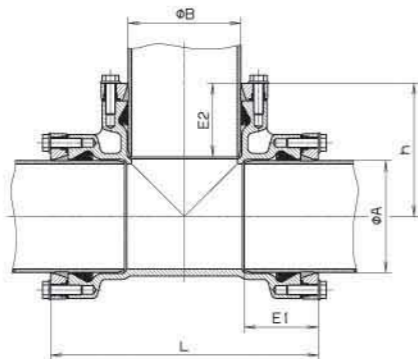
End Cap



Pipe ϕ mm	L	E	B	Weight kg
63	106	80	124	2,7
75	138	82	138	3,2
90	141	85	152	4,5
110	159	85	172	5,8
125	162	87	193	6,1
140	169	93	210	7,4
160	180	105	236	8,6
180	192	113	258	11,7
200	203	125	284	14,5
225	207	128	314	16,5
250	225	145	347	20,5
280	228	148	376	25,0
315	254	174	422	33,5

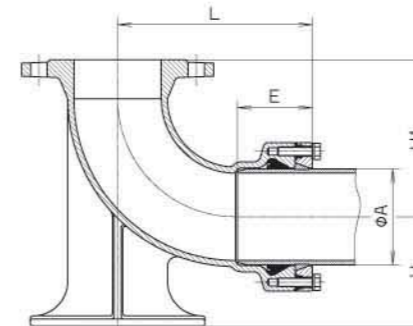
All Socket Tee

equal and reducing



ϕ A mm	ϕ B mm	L	E1	E2	h	Weight kg
63	63	236	83	83	118	6,0
75	75	250	85	85	125	7,7
90	90	268	85	85	134	9,0
110	63	240	85	80	140	7,7
	90	270	85	85	145	8,9
125	110	290	85	85	145	9,2
	90	274	87	85	150	10,4
140	110	294	97	85	150	10,7
	90	288	93	85	157,5	12,2
160	110	305	93	85	160	12,5
	140	344	96	96	167	19,0
180	90	310	105	85	170	14,0
	110	330	105	85	170	14,5
200	160	380	105	105	190	16,5
	125	360	113	87	180	24,0
225	180	415	113	113	207,5	29,0
	200	460	128	128	230	35,0
250	90	356	128	85	200	29,5
	110	376	128	128	200	30,0
225	225	488	130	130	244	55,0

Duck Foot Bend



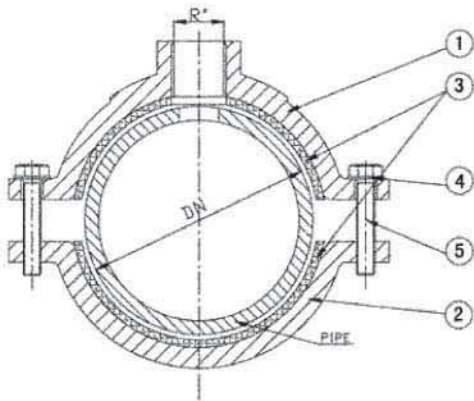
DN	Pipe ϕ mm	L	E	H	H1	Weight kg
80	90	210	85	110	165	12,7
100	110	223	85	125	180	16,0

Ductile iron Saddle for PVC/PE pipe



NO	REFERENCE	MATERIAL	STANDARD
1	BODY	GJS-400-10	EN1563
2	COVER	GJS-400-10	EN1563
3	GASKET	EPDM/NBR	EN681
4	WASHER	SS A2-70	
5	BOLT	SS A2-70	

SADDLE(For PVC/PE pipe)						
WEIGHT PIPE	R"	3/4"	1"	1-1/4"	1-1/2"	2"
	DN50		1.65	1.65	1.70	1.70
DN63		1.90	1.90	2.00	2.00	2.00
DN75		2.55	2.55	2.75	2.75	2.80
DN90		2.75	2.75	2.80	2.80	2.90
DN110		4.00	4.00	4.10	4.10	4.10
DN125		4.85	4.85	4.90	4.90	4.95
DN140		6.30	6.30	6.30	6.30	6.30
DN160		7.40	7.40	7.50	7.50	7.60
DN180		9.70	9.70	9.70	9.70	9.70
DN200		11.25	11.25	11.50	11.50	11.50
DN225		12.50	12.50	12.50	12.50	12.50
DN250		12.60	12.60	12.60	12.60	12.60
DN315		14.00	14.00	14.00	14.00	14.00



Saddle clamp for PVC pipe(PN10 Class)
 Material:GG-25
 Coating: FBE/Painting
 Size:DN32-160

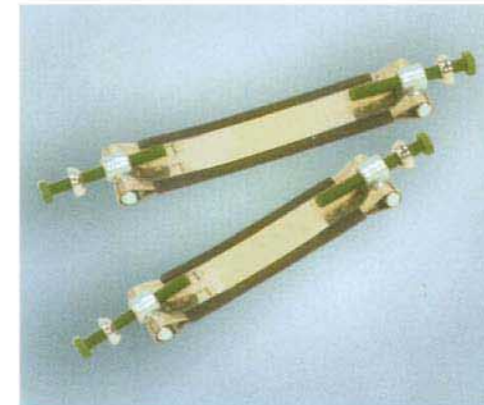
Universal saddle with outlet thread/flange



- Ductile iron GGG-40 epoxy coated outlet flange.
- EPDM gasket according to UNE EN 681/1.
- Mechanical insertion of the gasket in order to guarantee major watertightness.



ANSI-304 stainless steel band

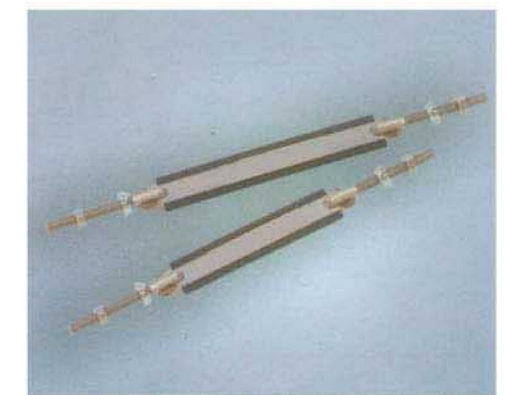


Saddle range for thread head type

OD Range(mm)	Saddle 3 Size(mm)		
	50-200	100-300	150-400
TOLERANZ			
60-77	●		
77-95	●		
98-119	●		
125-135	●	●	
139-160	●	●	
150-180	●	●	
170-195	●	●	
200-230		●	●
230-250		●	●
250-280		●	●
285-315		●	●
315-340		●	●
355-380		●	●
385-410			●
410-435			●

Saddle range for flange head type

DN	DN PIPE	PN	Bands n°
40	80/1000	10-16	2
50	80/700	10-16	2
60/65	100/700	10-16	2
80	125/700	10-16	2
100	150/500	10-16	5
125	200/600	10-16	2
150	300/500	10-16	3
150	500/900	10-16	3





Saddle Clamp for Ductile Iron Pipe

Material: GGG400-10
 Coating: FBE/Rilsan
 Size: DN80-300

Under Pressure TEE and Repair Clamp

Material: GGG400-10
 Utility: DI/AC/GRP/CI/PVC pipe
 Size: DN80-300



Tapping Sleeves with Flange outlet

Material: Carbon Steel
 Utility: DI/AC/GRP/CI/PVC pipe
 Size: DN80-1200



Bronze/Brass Saddle

Material: Bronze/Brass
 Utility: AC/PVC pipe
 Size: DN80-300



Surface Boxes and lids

TYPE 4055(31/48/25kg)
 TYPE 4056(14.0/11.0kg)
 TYPE 4057(8.5/5.5kg)
 TYPE 4059(7.0kg)
 TYPE 3581(15.5/14.0kg)



Gibault Joints

Material: GGG400-10/GG20
 Utility: PVC pipe
 Size: DN63-500

Gibault Coupling

Material: GGG400-10/GG20
 Utility: AC pipe
 Size: DN80-300



Surface Box for water meter

Material: GGG400-10
 Coating: FBE
 Size: DN80/100





Studed Reducer Flange

Standard: ISO2531/EN545
 Material: GGG400-10
 Size: DN80-300



Loose Flange fittings

Standard: ISO2531/EN545
 Material: GGG400-10
 Size: DN60-600

EX pipe fitting
 Standard: ISO2531/EN545
 Material: GGG400-10
 Size: DN60-300



Back-up ring
 Utility: Backing flange for use on HDPE
 Material: ASTM A536 Grade 65-45-12
 Class: ANSI/B1615 Class150
 Size: 2"-24"



NOMINAL BORE	STANDARD OUTSIDE DIAMETER																		
	IMPERIAL CAST IRON & ASBESTOS CEMENT (TURNED END) BS1211 (1981) (UT1 27" NB) BS78 (1981) BS486 (1986)				STEEL ISO/4200 (1991)				PVC-U	ABS	DUCTILE IRON	GRP	METRIC ASBESTOS CEMENT (TURNED END) BS486 (1990)						
	CLASS AB ONLY	CLASS CD ONLY	NON STD	SER 1	SER 2	SER 3	SER 3	BS1387 (1980)	BS3900 (1997) & BS3801 (1983) (pipe ends to BS354 (1980))	AS 51 (2000) & BS1080 (2000) UT1 36" NB	BS3505 (1988)	BS3506 (1988)	BS3511 (1978)	BS 12 541 (2002), BS 20 399 (1995), BS 1711 (1988) DIN 20801, 20802, 20803, 20805	BS4860 (1990) (Typical UK sizes)	CLASS 15	CLASS 20	CLASS 25	
15 0.5				21.3				21.3	21.4	21.4	21.4	21.4							
20 0.75				26.9	25.0	25.4		26.9	26.8	26.7	26.8	26.8	26.8						
25 1				33.7	32.0	30.0	35.0	33.7	33.6	33.4	33.6	33.6	33.6						
32 1.25				42.4	40.0	44.5		42.4	42.3	42.2	42.3	42.3	42.3						
40 1.5	55.9 2.20	55.9 2.20	57.0 2.25	48.3	57.0	54.0		48.3	48.3	48.3	48.3	48.3	48.3	56					
50 2	69.1 2.72	69.1 2.72		60.3	63.5			60.3	60.4	60.3	60.4	60.4	60.4	66					69
65 2.5	82.3 3.24	82.3 3.24	82.5 3.25	76.1	70.0	73.0		76.1	76.1	73.0		75.2		82					
80 3	95.5 3.76	95.5 3.76		88.9		82.5		88.9	88.9	88.9	88.9	88.9	88.8	98					96
90 3.5					101.6			101.6	101.6										
100 4	121.9 4.80	121.9 4.80		114.3	127.0	108.0		114.3	114.3	114.3	114.3	114.3	114.3	118					122
125 5	149.9 5.90	149.9 5.90		139.7	133.0	141.3	152.4	139.7	139.7	141.3	140.2	140.2		144					
150 6	177.3 6.98	177.3 6.98		168.3		159.0	177.8	165.1	168.3	168.3	168.3	168.3	168.3	170		177			177
175 7	204.7 8.06	204.7 8.06							193.7				193.8						
200 8	232.2 9.14	232.2 9.14		219.1					219.1	219.1	219.1	219.1	219.1	222	220	232	232	240	
225 9	259.1 10.20	259.1 10.20							244.5				244.5			259	259	268	
250 10	286.0 11.26	286.0 11.26		273.0					273.0	273.1	273.0	273.0		274	272	286	286	295	
300 12	333.8 13.14	345.4 13.60		323.9					323.9	323.9	323.9	323.9		326	324	334	345	356	
350 14	387.0 15.22	399.3 15.72		355.6					355.6	355.6	355.6	355.5		378	376	392	405	419	
375 15	413.0 16.26	426.2 16.78																	
400 16	439.0 17.30	453.1 17.84		406.4					406.4	406.4	406.4	406.4		429	427	448	463	478	
450 18	492.0 19.38	506.9 19.96		457.0					457.0	457.2	457.2	457.2		480	478	498	515	532	
500 20	545.0 21.46	560.3 22.06		508.0					508.0	508.0	508.0	508.0		532	530	568	586	605	
525 21	572.0 22.50	587.2 23.12																	
550 22	598.0 23.54	613.7 24.16					559.0		559.0	559.0		558.8							
600 24	650.0 25.60	667.0 26.26		610.0					610.0	609.6	609.6	609.6		635	633	654	672	691	
650 26	703.0 27.66	720.3 28.36					600.0		660.0	660.4									
675 27	729.0 28.70	746.8 29.40																	
700 28	755.0 29.72	773.2 30.44		711.0	762.0				711.0	711.2				738	718	761	780	801	
750 30	807.0 31.78	826.0 32.52							762.0	762.0						808	830	852	
800 32	860.0 33.84	879.3 34.62		813.0					813.0	812.8				842	820	882	904	915	
825 33	886.0 34.88	905.8 35.66																	
850 34	912.0 35.92						864.0		864.0	863.6						927	952	977	
900 36	964.0 37.96	984.5 38.76		914.0					914.0	914.4				945	924	970	996	1024	
1000 40	1068.0 42.06	1090.2 42.92		1016.0					1016.0	1016.0				1048	1027				
1050 42	1121.0 44.12	1143.0 45.00		1067.0	1168.0				1067.0	1066.8									
1100 44	1172.0 46.16			1118.0						1117.6				1152	1144				
1200 48	1277.0 50.26	1300.5 51.20		1219.0					1219.0	1219.2				1255	1228				
1300 52							1321.0									1350			
1400 56				1422.0					1422.0	1422.4				1462	1449				
1600 64				1626.0					1626.0	1625.6				1668	1640				
1800 72				1829.0					1829.0	1828.8				1875	1844				
2000 80				2032.0					2032.0	2032.0				2082	2048				

PVC-U & POLYETHYLENE (METRIC)
 BS ISO 11922-1 (1997)

METRIC PVC-U & PE HAVE A DESIGNATED NOMINAL BORE WHICH IS USUALLY THE SAME AS THE OUTSIDE DIAMETER. QUOTE PIPE CLASS, RATING OR WALL THICKNESS ON ENQUIRIES.

16	20	25	32	40	50	63	75	90	110	125	140	160	180	200	225	250	280	315	355	400	450	500	560	630	710	800	900	1000	1200	1400	1600
----	----	----	----	----	----	----	----	----	-----	-----	-----	-----	-----	-----	-----	-----	-----	-----	-----	-----	-----	-----	-----	-----	-----	-----	-----	------	------	------	------